



Jumper Retrofit Kit



Models: T300, T300e, Speed Scrub 300

This retrofit kit includes the necessary part to repair a machine that has experienced limited battery run time and/or a BDI that fails to display a full charge after a complete charge cycle with good condition batteries.

Kit Contents



Part No.	Description	Qty.
1240969*	Jumper	1
130040	Cable, Tie, Nyl, 06.0L .12W	1

* The kit contents will include either a wire harness jumper or a plug connector jumper as shown above. Both serve the same purpose.

INSTALLATION INSTRUCTIONS:

Installation Time: 1 hour

Tools Required: T25 torque screwdriver, wire cutters

FOR SAFETY: Before servicing machine, stop on level surface, turn off machine, and remove key.

1. Disconnect battery cables from machine.

⚠ WARNING: Always disconnect battery cables from machine before working on electrical components.

2. Unwrap the battery charger power cord from the cord hook.
3. Remove the two lower torque screws from bottom of control console and carefully lower the console cover to floor (Figure 1).

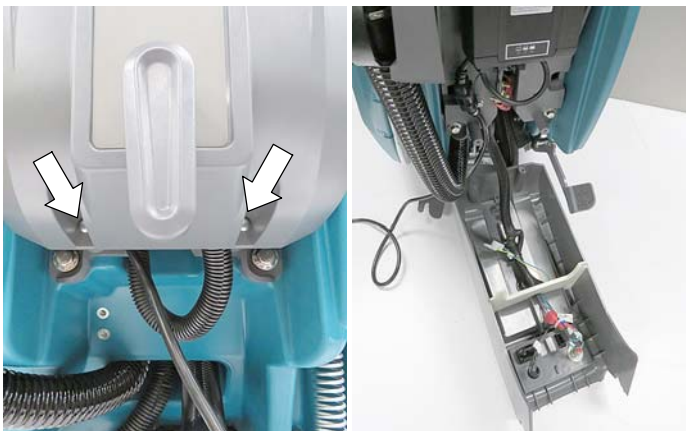


Fig. 1

4. Unplug the red diode from the machine harness located near the key switch. Remove the "DIODE-2" label from wire (Figure 2).

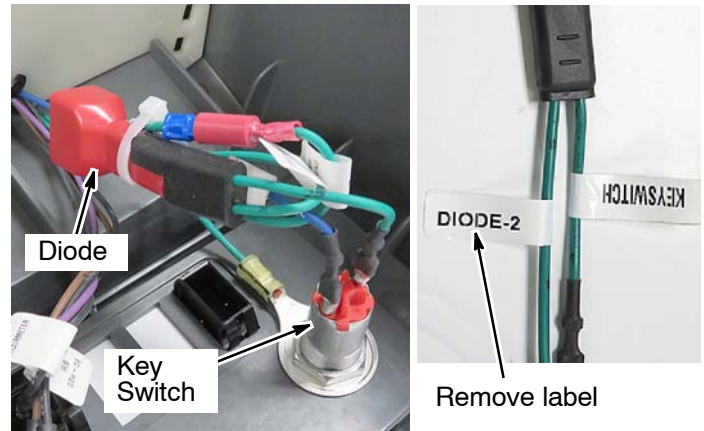
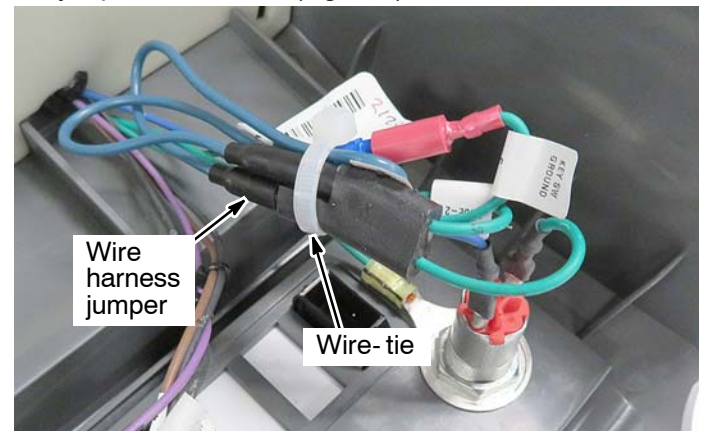


Fig. 2

5. Plug the jumper into the diode connector and secure jumper with wire-tie (Figure 3).



OR

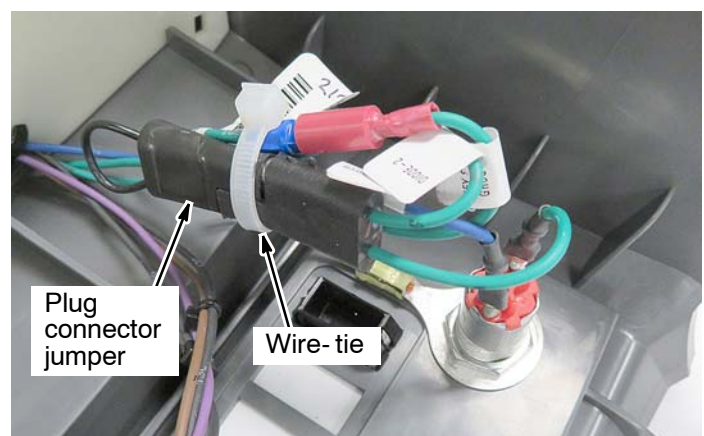


Fig. 3

6. Re-install the console cover and reconnect batteries.
7. Fully charge batteries.